

# Embryodrachtigheden Snowman X Warsi 55 RF

verv. Kalfdata

4x

1-11-2011 1-11-2011 7-12-2011 22-12-2011

**Vader:** Flevo Genetics Snowman

**Moeder:** Bonhill Warsi 55 RF

Frame	Uier	Benen	Kruis	Totaal
87	87	84		87

Leeftijd	Kg. Melk	% Vet	% Eiwit	Kg. Vet	Kg Eiwit	Dagen
2,01	10033	4,44	3,45	445	346	305



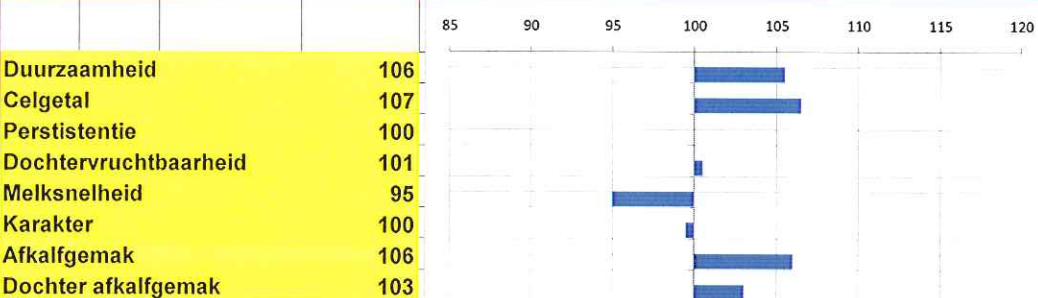
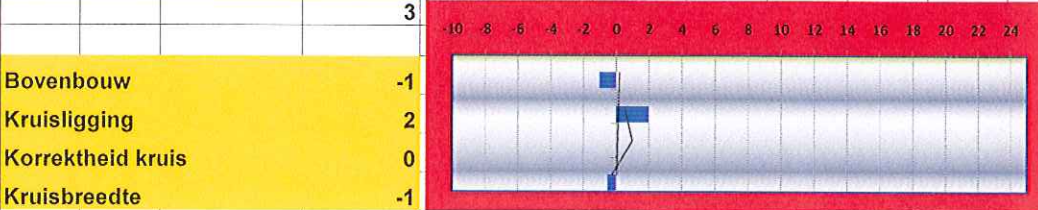
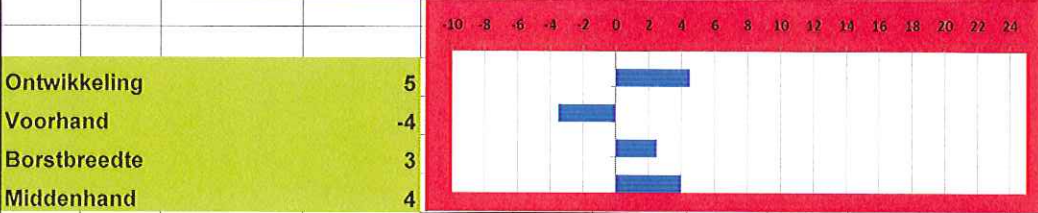
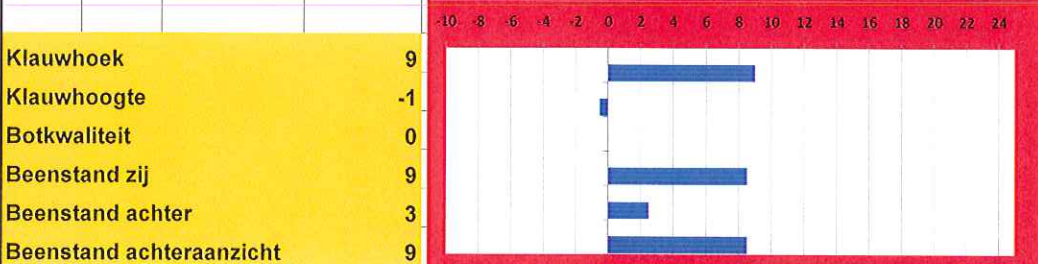
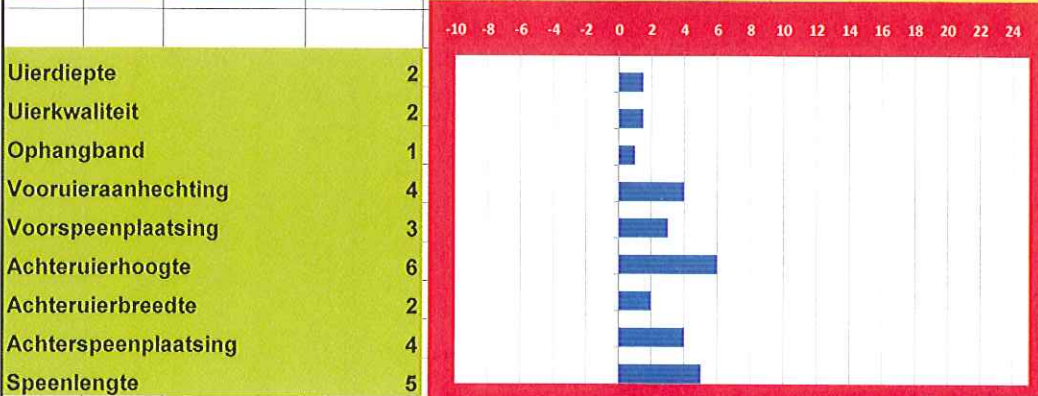
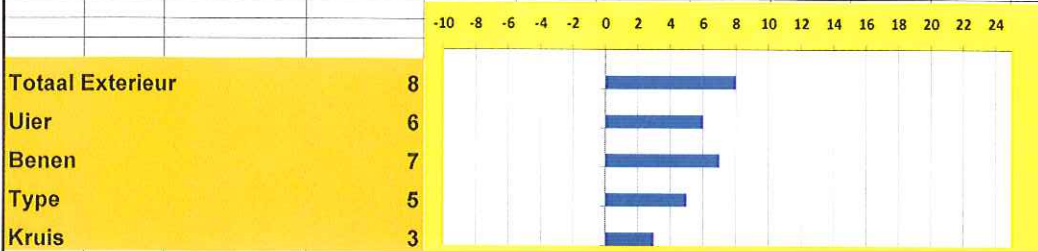
<b>M.V.</b>	<b>Ramos</b>						
<b>M.M.</b>	<b>Bonhill Warsi 19</b>			<b>90 pnt</b>			
	4,1	14219	3,63	3,35	516	476	305
<b>M.M.V.</b>	<b>Lightning</b>						
<b>M.M.M.</b>	<b>Bonhill Warsi 1</b>			<b>86 pnt</b>			
	3,03	10181	4,83	3,83	492	390	305
<b>M.M.M.V.</b>	<b>Newhouse Ronald</b>						
<b>M.M.M.M.</b>	<b>Bonhill Warsi</b>			<b>88 pnt</b>			
	4,06	12693	4,29	3,51	544	445	305
<b>M.M.M.M.V.</b>	<b>Weerdinger Echo Red</b>						
<b>M.M.M.M.M.</b>	<b>Etazon Warsau</b>			<b>87 pnt</b>			

Verw. Fokwaarde	Kg. Melk	% Vet	% Eiwit	Kg. Vet	Kg Eiwit	LPI
	2108	0,08%	0,05%	85	72	1883
Verw. Fokwaarde	Frame	Uier	Benen	Kruis	Totaal	Lpi
	5	6	7	3	8	616
Verw. Fokwaarde	Duurzaamh.	Dochtervruchtb.	Celgetal	Afkalfgemak		LPI
	106	101	107	103		79
				<b>TOTAAL LPI</b>		<b>2578</b>

## Embryodrachtigheden Snowman X Warsi 55 RF

	%
Melk	2108
Vet	85
Eiwit	72

<b>LPI</b>	<b>2578</b>
Productie	1883
Duurzaamheid	616
Gezondheid en vruchtbaarheid	79





# Genetic Evaluation Summary

**HONLDM38896513 FLEVO GENETICS SNOWMAN**

BW BLF CVF      Born 14-JAN-05    9.22%INB    11%R

Sire: <a href="#">HOUSAM122358313</a>	O-BEE MANFRED JUSTICE-ET	08-MAR-98	5.20%	10%
Dam: <a href="#">HONLDF381135900</a>	BROEKS MBM ELSA	22-FEB-03	9.03%	11%
MGS: <a href="#">HOUSAM2290977</a>	MARA-THON BW MARSHALL-ET	24-MAR-95	6.67%	12%

PRODUCTION		GMACE 11* <u>AUG</u>			LIFETIME PROFIT INDEX			Rel
		Kg	%RK	%Dev	GMACE LPI	3423	86	
Herds	456				PRODUCTION	2677		
Daughters	789	Milk	3309	99%	DURABILITY	838		
Lactations		Fat	113	99%	HEALTH & FERTILITY	-92		
Reliability	90%	Protein	103	99%				

**CONFORMATION**      GMACE 11\*AUG      Herds: 142    Daughters: 227    Reliability: 84%

SCORECARD	Rating	%RK	-15	-10	-5	0	5	10	15
Conformation	11	97%							
Mammary System	9	95%							
Feet & Legs	9	94%							
Dairy Strength	8	92%							
Rump	4	75%							

DESCRIPTIVE		Rating	%RK	-15	-10	-5	0	5	10	15
Udder Depth	3S		97%							
Udder Texture										
Median Suspensory	4		95%							
Fore Attachment	5		94%							
Front Teat Placement	5C		92%							
Rear Attachment Height	8		75%							
Rear Attachment Width										
Rear Teat Placement	2C									
Teat Length	7L									
Foot Angle	14									
Heel Depth										
Bone Quality										
Rear Legs Side View	9S									
Set of Rear Legs										
Rear Legs Rear View	9									
Stature	9									
Height at Front End										
Chest Width	3									
Body Depth	5									
Angularity	6									
Loin Strength										
Rump Angle	3L									
Pin Setting										
Pin Width	1									

FUNCTIONAL	Rating	Rel	Difference from Breed Average (SD)							Breed Avg.	
Herd Life	106GM	82%	Short							Long	100
Somatic Cell Score	2.58GM	89%	Undesirable							Desirable	3.00
Lactation Persistency	100GPA	62%	Poor							High	100
Daughter Fertility	94GM	75%	Poor							High	100
Milking Speed	95GM	83%	Slow							Fast	100
Milking Temperament	99GM	70%	Nervous							Calm	100
Calving Ability	105GM	82%	Difficult							Easy	100
Daughter Calving Ability	98GM	73%	Difficult							Easy	100

## FLEVO GENETICS SNOWMAN

Geb. Datum: 1/14/2005 (M/D/J)

Levensnummer: NLDM000388965513  
NAAB:
**Productie Kenmerken:**

% Bt.	Melk (pndn)	% Vet	Vet (pndn)	% Eiwit	Eiwit (pndn)	NM\$	FM\$	CM\$	Dochters VS	Bedrijven VS	% VS Dochters	Fokwaarde
90	2055	0.01	78	0.00	61	653	638	672	790	457	0	USA-I,08/2011

**Gebruikskennmerken:**

Kenmerk	% Bt.	Score
Moeilijke Geboorten	66%	6
Levensduur	79%	4.1
Celgetal Index	86%	2.74

**Exterieur Informatie,  
08/2011:**

PTI	2227	PTAT	2.34
% Bt.	Dochters VS	Bedrijven VS	
86%	227	142	

**Afstamming:**

Vader	<a href="#">O-BEE MANFRED JUSTICE-ET</a>
Moeders Vader	<a href="#">MARA-THON BW MARSHALL-ET</a>
Vaders Vader	<a href="#">HA-HO CUBBY MANFRED-ET</a>

**Exterieur Kenmerken:**

Kenmerk	Profiel	Score
Uier		1.77
Benen		2.77
Body		1.92
Melk Type		2.11
Ontwikkeling		2.60
Kracht		1.13
Middenhand		1.66
Melktype		2.09
Kruisligging		1.06
Kruisbreedte		0.90
Beenstand		-1.57
Beenstnad zij		2.87
Klauwhoek		3.48
Benen & Kl		2.58
Vooruieraanh		1.99
Achteruier hgt.		3.33
Achteruier brdt.		3.09
Ophangband		1.31
Uierdiepte		1.11
Speenplaatsing		1.20
Speenlengte		1.32
Teat Length		1.32
HA-, 08/2011	<b>-2 -1 0 +1 +2</b>	



## Genetic Evaluation Summary

**HONLDF472786534**

**BONHILL WARSI 55 RC**

**%INB %R**

Born 16-AUG-07

ET

4.10% 9%

Sire: [HODEUM253642](#)

RAMOS

26-JUN-97

3.00% 12%

Dam: [HONLDF383983147](#)

14-DEC-03

2.40% 7%

MGS: [HONLDM170475222](#)

LIGHTNING

06-DEC-95

2.22% 5%

### PRODUCTION

**GMACE 11\*AUG**

### LIFETIME PROFIT INDEX

Rel

		Kg	%RK	%Dev
Lactations	0			
Test Day Records	Milk	906	82%	
Daughters/Sons	Fat	57	97%	+0.24
Reliability	63% Protein	41	94%	+0.12

	GPA LPI	1732	60
PRODUCTION		1089	
DURABILITY		394	
HEALTH & FERTILITY		249	

### CONFORMATION

**GPA 11\*AUG**

Reliability: 59%

SCORECARD	Index	%RK	-15	-10	-5	0	5	10	15
Conformation	5	70%							
Mammary System	3	56%							
Feet & Legs	5	77%							
Dairy Strength	2	51%							
Rump	2	51%							

### DESCRIPTIVE

Udder Depth	0	Deep							Shallow
Udder Texture	0	Fleshy							Soft
Median Suspensory	-2	Weak							Strong
Fore Attachment	3	Weak							Strong
Front Teat Placement	1C	Wide							Close
Rear Attachment Height	4	Low							High
Rear Attachment Width	4	Narrow							Wide
Rear Teat Placement	6W	Wide							Close
Teat Length	3S	Short							Long
Foot Angle	4	Low							Steep
Heel Depth	-1	Shallow							Deep
Bone Quality	0	Coarse							Flat
Rear Legs Side View	8S	Straight							Curved
Set of Rear Legs	5	Undesirable							Desirable
Rear Legs Rear View	8	Hocked-in							Straight
Stature	0	Short							Tall
Height at Front End	-7	Low							High
Chest Width	2	Narrow							Wide
Body Depth	3	Shallow							Deep
Angularity	0	Non-Angular							Angular
Loin Strength	-2	Weak							Strong
Rump Angle	1H	High							Low
Pin Setting	0	Undesirable							Desirable
Pin Width	-2	Narrow							Wide

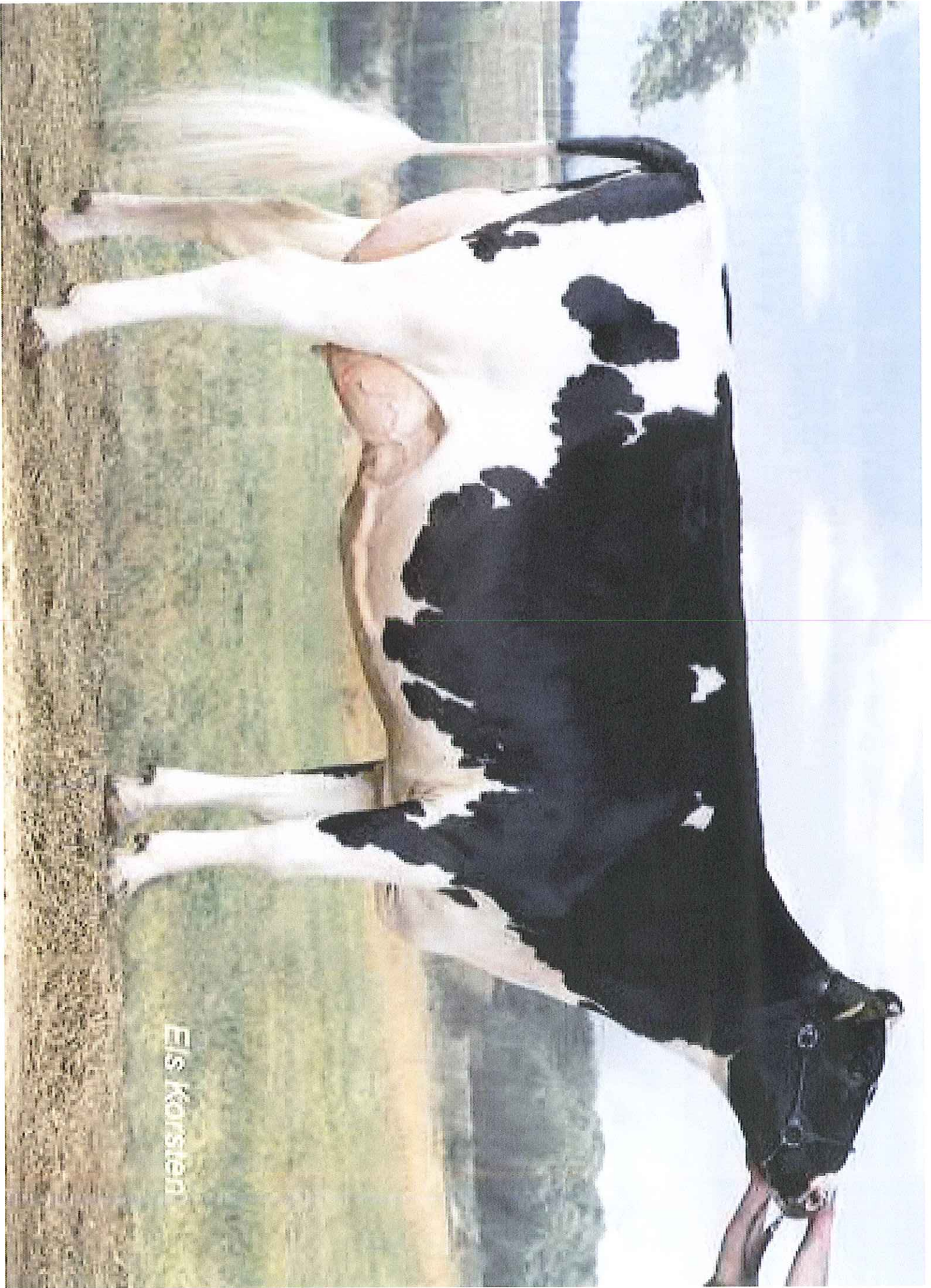
### FUNCTIONAL

Rating Rel

Difference from Breed Average (SD)

Breed Avg.

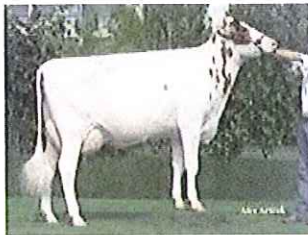
Herd Life	105GPA	58%	Short						Long	100
Somatic Cell Score	2.77GM	61%	Undesirable						Desirable	3.00
Lactation Persistency	100GPA	52%	Poor						High	100
Daughter Fertility	107GPA	52%	Poor						High	100
Milking Speed	95GPA	50%	Slow						Fast	100
Milking Temperament	100GPA	49%	Nervous						Calm	100
Calving Ability	107GPA	59%	Difficult						Easy	100
Daughter Calving Ability	108GPA	49%	Difficult						Easy	100



Els Korsten

**BONHILL WARSI 55\*RF**

Bonhill Warsi 19



Bonhill Warsi 20

<b>NAAM:</b>	<b>4 EMBRYOS FG SNOWMAN X BONHILL WARSI 55*RF</b> NL 472786534 geb.dat. 16-08-2007 <b>GEWELDIGE ROODFACTOR RAMOS UIT GEWELDIGE WARSAU FAMILIE!</b> <b>VG-87</b>
<b>PRODUCTIE:</b>	2.01 305d 10.033kgM 4.43%F 445kgF 3.45%P 346kgP LW 130
<b>INDEX:</b>	NL 08-2010: B&W +1076kgM +0.05%F -0.10%P +51kgF +28kgP INET +89 NVI +215 SCS 108 Fert. 101 Type: F 105 DS 105 U 106 F&L 107 FS 109
<b>OMSCHRIJVING:</b>	- deze embryos worden verkocht met een stiercontract voor K&L  - VG-87 Ramos x EX-90 Lightning x VG-86 Ronald x VG-88 Echo x VG-87 Aerostar x VG-88 Cleitus - een van de meest interessantste koeien voor Red Holstein van dit moment!! - maak nu Snowmans met roodfactor!
<b>EXTERIEUR:</b>	VG-87
<b>V:</b>	<b>RAMOS</b>
<b>M:</b>	<b>BONHILL WARSI 19</b> <b>EX-90</b> 2.00 305d 11.298 kgM 3.81%F 430kgF 3.47%P 391kgP LW 132 3.09 305d 12.944 kgM 3.92%F 508kgF 3.47%P 449kgP LW 125 4.10 305d 14.219 kgM 3.63%F 516kgF 3.35%P 476kgP LW 118  - Warsi 19 komt uit de beroemde Etazon Warsau familie - zelfde familie als Etazon Yava, Bonhill Good Luck (Alta), Lotto Red (Alta), Etazon Abruzzi, Jackpot, Aerospace, Granduc Famous en Lucky Chief - Warsi 19 haar volle zus WARSI 20 was derde in haar klasse op het Europees Kampioenschap in Oldenburg 2006! - Warsi 20 was Reserve kampioen op de NRM 2006! - Bonhill Warsi 19 RF was ook deelnemster op de NRM
<b>MV:</b>	<b>LIGHTNING</b>
<b>MM:</b>	<b>BONHILL WARSI 1</b> <b>VG-86</b> 3.03 305d 10.181kgM 4.83%F 492kgF 3.83%P 390kgP  - er zijn diverse showkoeien uit deze familiy, zoals Lotje EX-90. Ze was ook deelnemster op de Europese Show in Brussel
<b>MMV:</b>	<b>NEWHOUSE RONALD</b>
<b>MMM:</b>	<b>BONHILL WARSI TV TL</b> <b>VG-88</b> 2.02 305d 10.220kgM 4.15%F 425kgF 3.59%P 367kgP 4.06 305d 12.693kgM 4.29%F 544kgF 3.50%P 445kgP
<b>MMM:</b>	<b>WEERDINGER ECHO RED</b>
<b>MMMM:</b>	<b>ETAZON WARSAU</b> <b>VG-87</b>
<b>MMMMV:</b>	<b>AEROSTAR</b>

87-86-87-84-87

2-1-426-13600 4.47-27